

# EUROTRAY

CABLE SUPPORT SYSTEMS

EUN

EUROTRAY

## DELİKSİZ TİP KABLO KANALLARI

*Solid Bottom Type Cable Trays*

### ÜRÜN KODU

*Item Code*

EUN 300 40 150

- Kalınlık (Thickness)
- Yükseklik (Height)
- Genişlik (Width)
- Seri (Series)

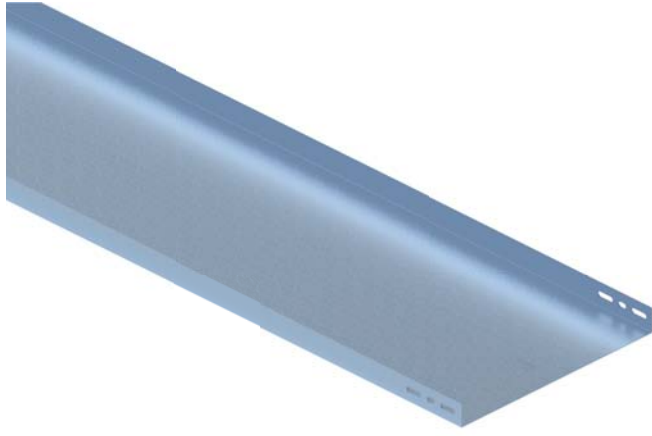
### MALZEME&YÜZEY

*Material&Surface*

- Pregalvaniz (Pregalvanized)
- Sıcak Daldırma Galvaniz (Hot Dip Galvanized)
- Alüminyum (Aluminium)
- Paslanmaz Çelik (Stainless Steel)
- Elektrostatik Toz Boya (Electrostatic Powder Paint)

# Deliksiz-Hafif/Orta Hizmet Tipi Kablo Kanalları Solid Bottom-Low/Medium Duty Type Cable Trays

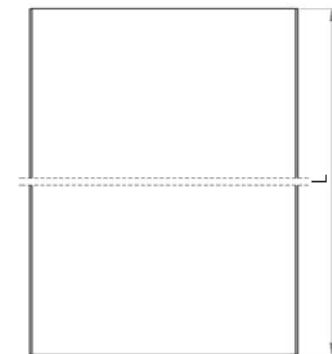
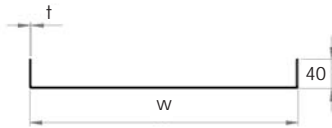
# EUN40 SERIES



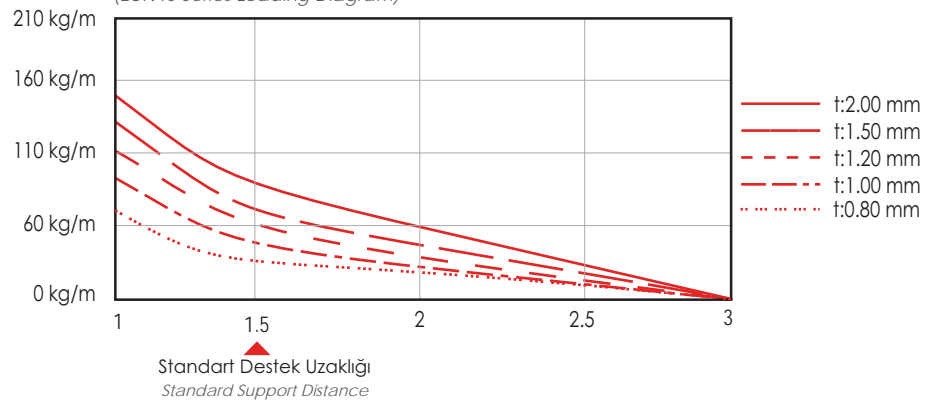
Yükseklik (Height)	: 40 mm
Genişlik (Width)	: 50 - 600 mm
Kalınlık (Thickness)	: 0,8 - 2,0 mm
Uzunluk (Length)	: 2500/3000 mm

Ürün Kodu Product Code	Genişlik Width (mm)	Kalınlık Thickness (mm)	Ağırlık* Weight* (Kg/m)	Ağırlık** Weight** (Kg/m)
EUN-05040-080	50	0,8	0,774	0,870
EUN-05040-100	50	1,0	0,966	1,072
EUN-05040-120	50	1,2	1,160	1,269
EUN-05040-150	50	1,5	1,450	1,564
EUN-05040-200	50	2,0	1,901	2,023
EUN-10040-080	100	0,8	1,088	1,224
EUN-10040-100	100	1,0	1,359	1,507
EUN-10040-120	100	1,2	1,631	1,785
EUN-10040-150	100	1,5	2,039	2,200
EUN-10040-200	100	2,0	2,686	2,858
EUN-15040-100	150	1,0	1,751	1,942
EUN-15040-120	150	1,2	2,102	2,301
EUN-15040-150	150	1,5	2,628	2,835
EUN-15040-200	150	2,0	3,471	3,693
EUN-20040-100	200	1,0	2,144	2,378
EUN-20040-120	200	1,2	2,573	2,816
EUN-20040-150	200	1,5	3,216	3,470
EUN-20040-200	200	2,0	4,256	4,528
EUN-25040-150	250	1,5	3,805	4,105
EUN-25040-200	250	2,0	5,041	5,363
EUN-30040-120	300	1,2	3,515	3,847
EUN-30040-150	300	1,5	4,394	4,740
EUN-30040-200	300	2,0	5,826	6,198
EUN-40040-150	400	1,5	5,571	6,010
EUN-40040-200	400	2,0	7,396	7,868
EUN-50040-150	500	1,5	6,749	7,281
EUN-50040-200	500	2,0	8,966	9,538
EUN-60040-150	600	1,5	7,926	8,551
EUN-60040-200	600	2,0	10,536	11,208

\* Pregalvaniz      \*\* Sıcak Daldırma Galvaniz  
\* Pregalvanized    \*\* Hot Dip Galvanized

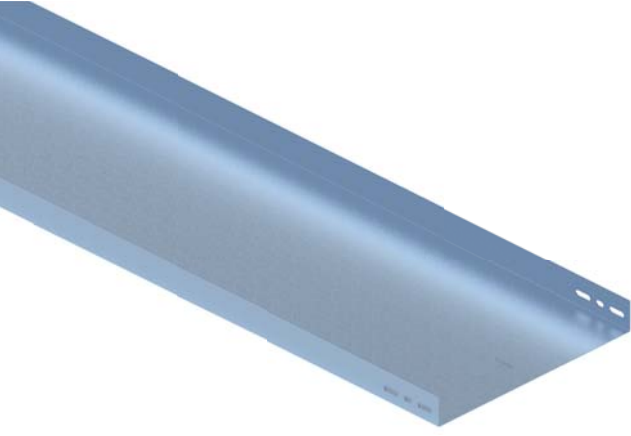


EUN40 Serisi Yükleme Diyagramı  
(EUN40 Series Loading Diagram)



# EUN50 SERIES

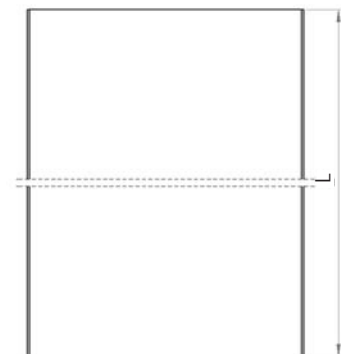
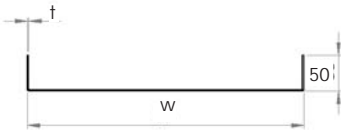
## Deliksiz-Hafif/Orta Hizmet Tipi Kablo Kanalları Solid Bottom-Low/Medium Duty Type Cable Trays



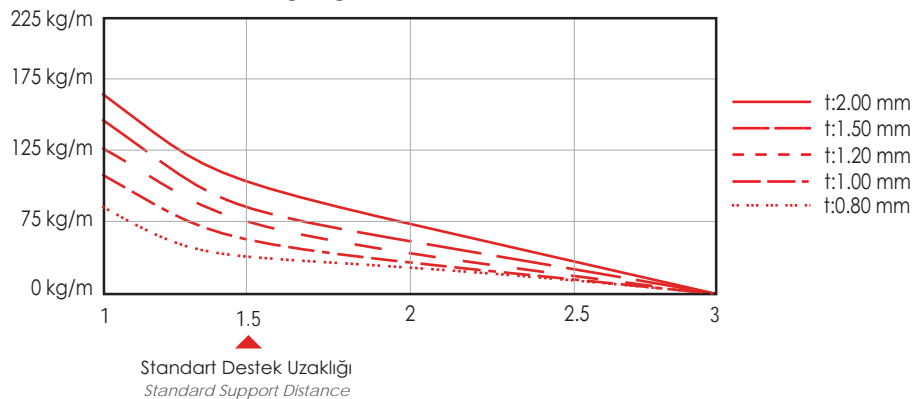
Yükseklik (Height)	: 50 mm
Genişlik (Width)	: 50 - 600 mm
Kalınlık (Thickness)	: 0,8 - 2,0 mm
Uzunluk (Length)	: 2500/3000 mm

Ürün Kodu Product Code	Genişlik Width (mm)	Kalınlık Thickness (mm)	Ağırlık* Weight* (Kg/m)	Ağırlık** Weight** (Kg/m)
EUN-05050-080	50	0,8	0,899	1,012
EUN-05050-100	50	1,0	1,123	1,246
EUN-05050-120	50	1,2	1,348	1,476
EUN-05050-150	50	1,5	1,686	1,818
EUN-05050-200	50	2,0	2,215	2,357
EUN-10050-080	100	0,8	1,213	1,365
EUN-10050-100	100	1,0	1,516	1,681
EUN-10050-120	100	1,2	1,819	1,991
EUN-10050-150	100	1,5	2,274	2,454
EUN-10050-200	100	2,0	3,000	3,192
EUN-15050-100	150	1,0	1,908	2,117
EUN-15050-120	150	1,2	2,290	2,507
EUN-15050-150	150	1,5	2,863	3,089
EUN-15050-200	150	2,0	3,785	4,027
EUN-20050-100	200	1,0	2,301	2,552
EUN-20050-120	200	1,2	2,761	3,022
EUN-20050-150	200	1,5	3,452	3,724
EUN-20050-200	200	2,0	4,570	4,862
EUN-25050-150	250	1,5	4,041	4,359
EUN-25050-200	250	2,0	5,355	5,697
EUN-30050-150	300	1,5	4,629	4,994
EUN-30050-200	300	2,0	6,140	6,532
EUN-40050-150	400	1,5	5,807	6,264
EUN-40050-200	400	2,0	7,710	8,202
EUN-50050-150	500	1,5	6,984	7,535
EUN-50050-200	500	2,0	9,280	9,872
EUN-60050-150	600	1,5	8,162	8,805
EUN-60050-200	600	2,0	10,850	11,542

\* Pregalvaniz      \*\* Sıcak Daldırma Galvaniz  
\* Pregalvanized    \*\* Hot Dip Galvanized

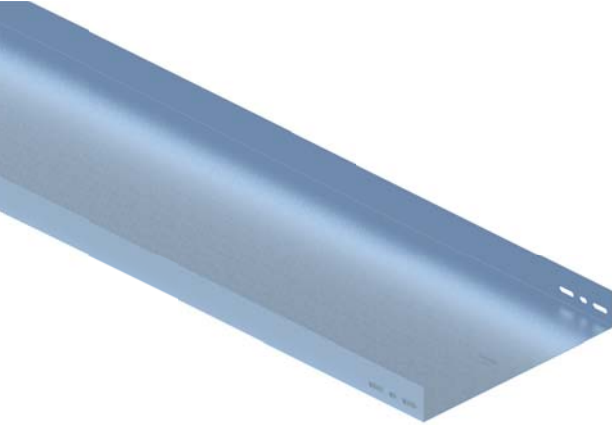


EUN50 Serisi Yükleme Diyagramı  
(EUN50 Series Loading Diagram)



Deliksiz-Hafif/Orta Hizmet Tipi Kablo Kanalları  
Solid Bottom-Low/Medium Duty Type Cable Trays

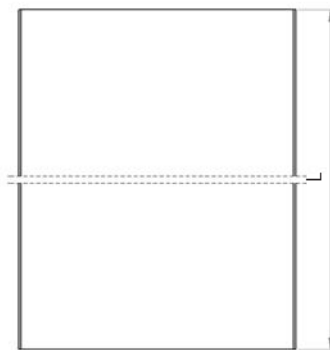
# EUN60 SERIES



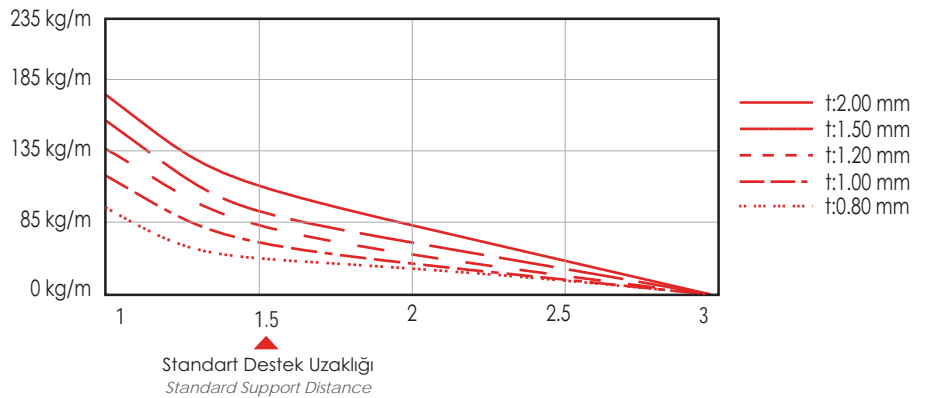
Yükseklik (Height)	: 60 mm
Genişlik (Width)	: 50 - 600 mm
Kalınlık (Thickness)	: 0,8 - 2,0 mm
Uzunluk (Length)	: 2500/3000 mm

Ürün Kodu Product Code	Genişlik Width (mm)	Kalınlık Thickness (mm)	Ağırlık* Weight* (Kg/m)	Ağırlık** Weight** (Kg/m)
EUN-05060-080	50	0,8	1,025	1,153
EUN-05060-100	50	1,0	1,280	1,420
EUN-05060-120	50	1,2	1,536	1,682
EUN-05060-150	50	1,5	1,921	2,073
EUN-05060-200	50	2,0	2,529	2,691
EUN-10060-080	100	0,8	1,339	1,506
EUN-10060-100	100	1,0	1,673	1,855
EUN-10060-120	100	1,2	2,007	2,197
EUN-10060-150	100	1,5	2,510	2,708
EUN-10060-200	100	2,0	3,314	3,526
EUN-15060-100	150	1,0	2,065	2,291
EUN-15060-120	150	1,2	2,478	2,713
EUN-15060-150	150	1,5	3,099	3,343
EUN-15060-200	150	2,0	4,099	4,361
EUN-20060-120	200	1,2	2,949	3,229
EUN-20060-150	200	1,5	3,687	3,978
EUN-20060-200	200	2,0	4,884	5,196
EUN-25060-150	250	1,5	4,276	4,613
EUN-25060-200	250	2,0	5,669	6,031
EUN-30060-150	300	1,5	4,865	5,248
EUN-30060-200	300	2,0	6,454	6,866
EUN-40060-150	400	1,5	6,042	6,519
EUN-40060-200	400	2,0	8,024	8,536
EUN-50060-150	500	1,5	7,220	7,789
EUN-50060-200	500	2,0	9,594	10,206
EUN-60060-150	600	1,5	8,397	9,059
EUN-60060-200	600	2,0	11,164	11,876

\* Pregalvaniz \* Pregalvanized  
\*\* Sıcak Daldırma Galvaniz \*\* Hot Dip Galvanized

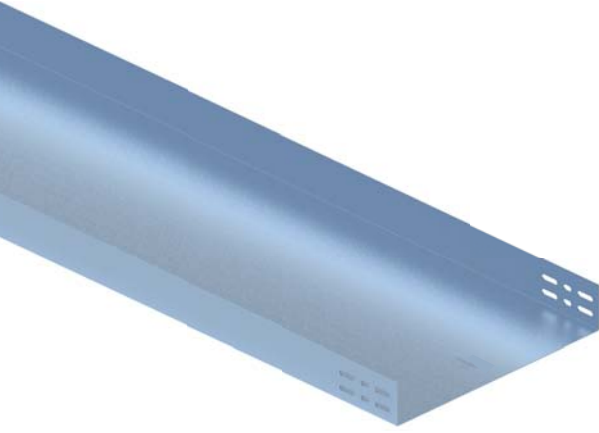


EUN60 Serisi Yükleme Diyagramı  
(EUN60 Series Loading Diagram)



# EUN75 SERIES

## Deliksiz-Hafif/Orta Hizmet Tipi Kablo Kanalları Solid Bottom-Low/Medium Duty Type Cable Trays



Ürün Kodu Product Code	Genişlik Width (mm)	Kalınlık Thickness (mm)	Ağırlık* Weight* (Kg/m)	Ağırlık** Weight** (Kg/m)
EUN-10075-120	100	1,2	2,281	2,498
EUN-10075-150	100	1,5	2,853	3,078
EUN-10075-200	100	2,0	3,771	4,012
EUN-15075-120	150	1,2	2,752	3,013
EUN-15075-150	150	1,5	3,442	3,713
EUN-15075-200	150	2,0	4,556	4,847
EUN-20075-120	200	1,2	3,223	3,529
EUN-20075-150	200	1,5	4,031	4,348
EUN-20075-200	200	2,0	5,341	5,682
EUN-25075-150	250	1,5	4,619	4,983
EUN-25075-200	250	2,0	6,126	6,517
EUN-30075-150	300	1,5	5,208	5,619
EUN-30075-200	300	2,0	6,911	7,352
EUN-40075-150	400	1,5	6,386	6,889
EUN-40075-200	400	2,0	8,481	9,022
EUN-50075-150	500	1,5	7,563	8,159
EUN-50075-200	500	2,0	10,051	10,692
EUN-60075-150	600	1,5	8,741	9,429
EUN-60075-200	600	2,0	11,621	12,362

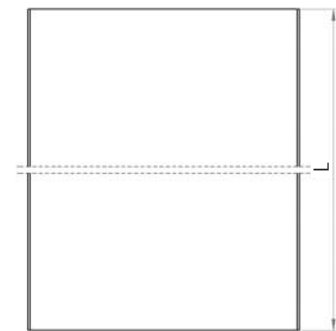
Yükseklik  
(Height) : 50 mm

Genişlik  
(Width) : 50 - 600 mm

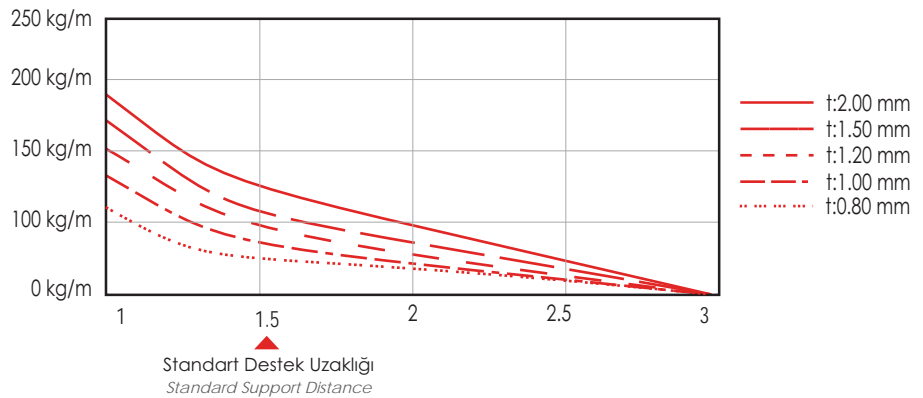
Kalınlık  
(Thickness) : 0,8 - 2,0 mm

Uzunluk  
(Length) : 2500/3000 mm

\* Pregalvaniz \*\* Sıcak Daldırma Galvaniz  
\* Pregalvanized \*\* Hot Dip Galvanized



EUN75 Serisi Yükleme Diyagramı  
(EUN75 Series Loading Diagram)

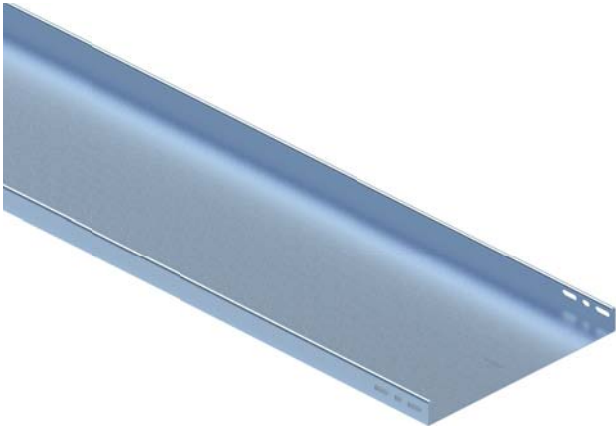




# Deliksiz Ağır Hizmet Tipi Kablo Kanalları

## Solid Bottom Heavy Duty Type Cable Trays

# EUH40 SERIES

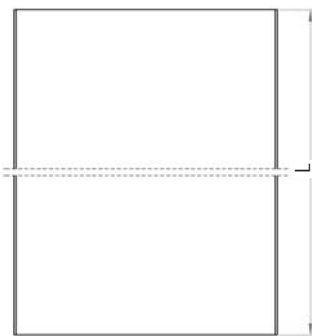


Yükseklik (Height)	: 40 mm
Genişlik (Width)	: 50 - 600 mm
Kalınlık (Thickness)	: 0,8 - 2,0 mm
Uzunluk (Length)	: 2500/3000 mm

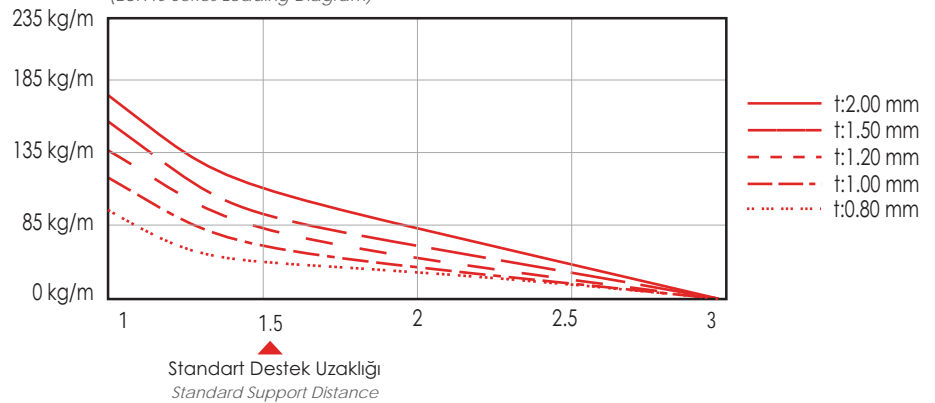
Ürün Kodu Product Code	Genişlik Width (mm)	Kalınlık Thickness (mm)	Ağırlık* Weight* (Kg/m)	Ağırlık** Weight** (Kg/m)
EUH-05040-080	50	0,8	0,899	1,012
EUH-05040-100	50	1,0	1,123	1,246
EUH-05040-120	50	1,2	1,348	1,476
EUH-05040-150	50	1,5	1,686	1,818
EUH-05040-200	50	2,0	2,215	2,357
EUH-10040-080	100	0,8	1,213	1,365
EUH-10040-100	100	1,0	1,516	1,681
EUH-10040-120	100	1,2	1,819	1,991
EUH-10040-150	100	1,5	2,274	2,454
EUH-10040-200	100	2,0	3,000	3,192
EUH-15040-100	150	1,0	1,908	2,117
EUH-15040-120	150	1,2	2,290	2,507
EUH-15040-150	150	1,5	2,863	3,089
EUH-15040-200	150	2,0	3,785	4,027
EUH-20040-100	200	1,0	2,301	2,552
EUH-20040-120	200	1,2	2,761	3,022
EUH-20040-150	200	1,5	3,452	3,724
EUH-20040-200	200	2,0	4,570	4,862
EUH-25040-120	250	1,2	3,232	3,538
EUH-25040-150	250	1,5	4,041	4,359
EUH-25040-200	250	2,0	5,355	5,697
EUH-30040-120	300	1,2	3,703	4,054
EUH-30040-150	300	1,5	4,629	4,994
EUH-30040-200	300	2,0	6,140	6,532
EUH-40040-150	400	1,5	5,807	6,264
EUH-40040-200	400	2,0	7,710	8,202
EUH-50040-150	500	1,5	6,984	7,535
EUH-50040-200	500	2,0	9,280	9,872
EUH-60040-150	600	1,5	8,162	8,805
EUH-60040-200	600	2,0	10,850	11,542

\* Pregalvaniz  
\* Pregalvanized

\*\* Sıcak Daldırma Galvaniz  
\*\* Hot Dip Galvanized



EUH40 Serisi Yükleme Diyagramı  
(EUH40 Series Loading Diagram)



# EUH50 SERIES

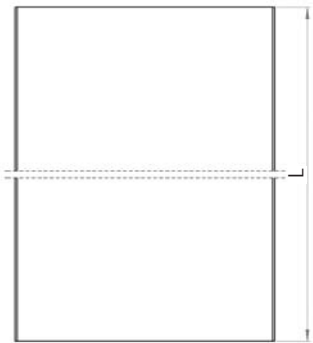
## Deliksiz Ağır Hizmet Tipi Kablo Kanalları Solid Bottom Heavy Duty Type Cable Trays



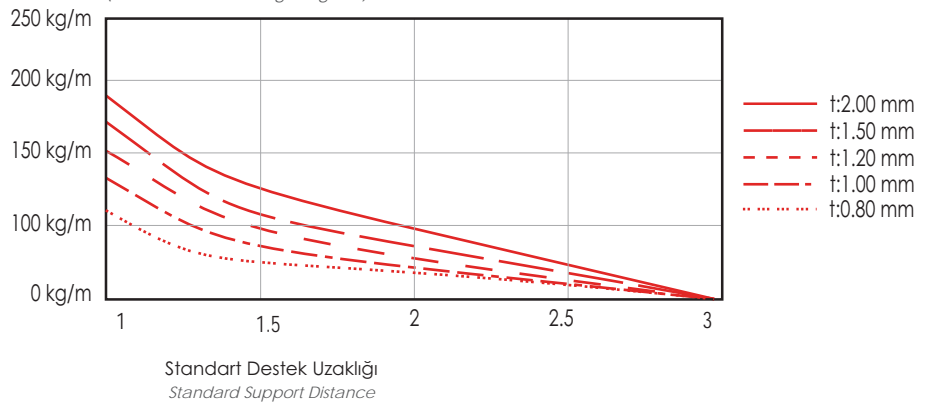
Yükseklik (Height)	: 50 mm
Genişlik (Width)	: 50 - 600 mm
Kalınlık (Thickness)	: 0,8 - 2,0 mm
Uzunluk (Length)	: 2500/3000 mm

Ürün Kodu Product Code	Genişlik Width (mm)	Kalınlık Thickness (mm)	Ağırlık* Weight* (Kg/m)	Ağırlık** Weight** (Kg/m)
EUH-05050-080	50	0,8	1,025	1,153
EUH-05050-100	50	1,0	1,280	1,420
EUH-05050-120	50	1,2	1,536	1,682
EUH-05050-150	50	1,5	1,921	2,073
EUH-05050-200	50	2,0	2,529	2,691
EUH-10050-080	100	0,8	1,339	1,506
EUH-10050-100	100	1,0	1,673	1,855
EUH-10050-120	100	1,2	2,007	2,197
EUH-10050-150	100	1,5	2,510	2,708
EUH-10050-200	100	2,0	3,314	3,526
EUH-15050-100	150	1,0	2,065	2,291
EUH-15050-120	150	1,2	2,478	2,713
EUH-15050-150	150	1,5	3,099	3,343
EUH-15050-200	150	2,0	4,099	4,361
EUH-20050-100	200	1,0	2,458	2,726
EUH-20050-120	200	1,2	2,949	3,229
EUH-20050-150	200	1,5	3,687	3,978
EUH-20050-200	200	2,0	4,884	5,196
EUH-25050-120	250	1,2	3,420	3,744
EUH-25050-150	250	1,5	4,276	4,613
EUH-25050-200	250	2,0	5,669	6,031
EUH-30050-120	300	1,2	3,891	4,260
EUH-30050-150	300	1,5	4,865	5,248
EUH-30050-200	300	2,0	6,454	6,866
EUH-40050-150	400	1,5	6,042	6,519
EUH-40050-200	400	2,0	8,024	8,536
EUH-50050-150	500	1,5	7,220	7,789
EUH-50050-200	500	2,0	9,594	10,206
EUH-60050-150	600	1,5	8,397	9,059
EUH-60050-200	600	2,0	11,164	11,876

\* Pregalvaniz      \*\* Sıcak Daldırma Galvaniz  
\* Pregalvanized    \*\* Hot Dip Galvanized



EUH50 Serisi Yükleme Diyagramı  
(EUH50 Series Loading Diagram)



# Deliksiz Ağır Hizmet Tipi Kablo Kanalları

Solid Bottom Heavy Duty Type Cable Trays

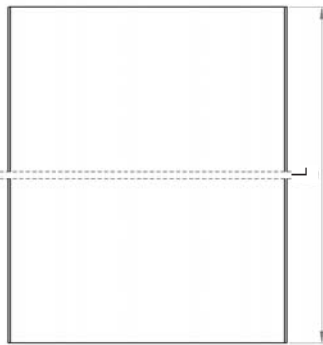
# EUH60 SERIES



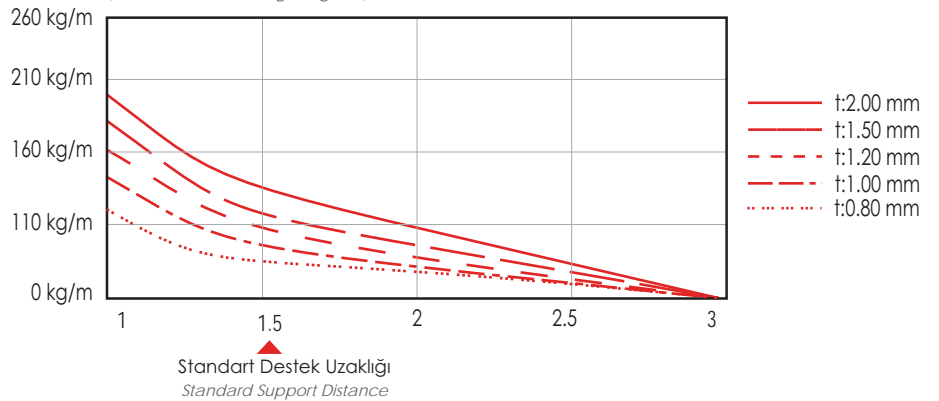
Yükseklik (Height)	: 60 mm
Genişlik (Width)	: 100 - 600 mm
Kalınlık (Thickness)	: 0,8 - 2,0 mm
Uzunluk (Length)	: 2500/3000 mm

Ürün Kodu Product Code	Genişlik Width (mm)	Kalınlık Thickness (mm)	Ağırlık* Weight* (Kg/m)	Ağırlık** Weight** (Kg/m)
EUH-10060-080	100	0,8	1,465	1,648
EUH-10060-100	100	1,0	1,830	2,029
EUH-10060-120	100	1,2	2,196	2,404
EUH-10060-150	100	1,5	2,745	2,962
EUH-10060-200	100	2,0	3,628	3,860
EUH-15060-100	150	1,0	2,222	2,465
EUH-15060-120	150	1,2	2,667	2,919
EUH-15060-150	150	1,5	3,334	3,597
EUH-15060-200	150	2,0	4,413	4,695
EUH-20060-100	200	1,0	2,615	2,900
EUH-20060-120	200	1,2	3,138	3,435
EUH-20060-150	200	1,5	3,923	4,232
EUH-20060-200	200	2,0	5,198	5,530
EUH-25060-120	250	1,2	3,609	3,951
EUH-25060-150	250	1,5	4,512	4,867
EUH-25060-200	250	2,0	5,983	6,365
EUH-30060-120	300	1,2	4,080	4,466
EUH-30060-150	300	1,5	5,100	5,502
EUH-30060-200	300	2,0	6,768	7,200
EUH-40060-150	400	1,5	6,278	6,773
EUH-40060-200	400	2,0	8,338	8,870
EUH-50060-150	500	1,5	7,455	8,043
EUH-50060-200	500	2,0	9,908	10,540
EUH-60060-150	600	1,5	8,633	9,313
EUH-60060-200	600	2,0	11,478	12,210

\* Pregalvaniz      \*\* Sıcak Daldırma Galvaniz  
\* Pregalvanized    \*\* Hot Dip Galvanized



EUH60 Serisi Yükleme Diyagramı  
(EUH60 Series Loading Diagram)





# EUH75 SERIES

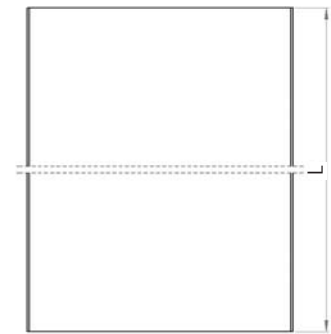
## Deliksiz Ağır Hizmet Tipi Kablo Kanalları Solid Bottom Heavy Duty Type Cable Trays



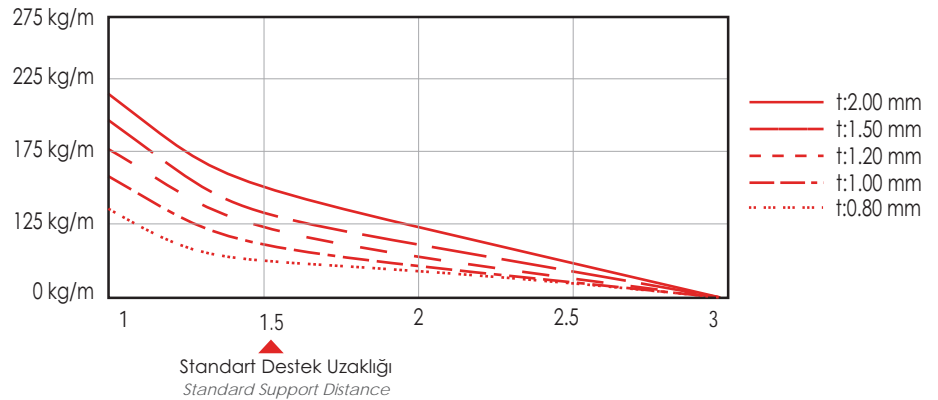
Yükseklik (Height)	: 75 mm
Genişlik (Width)	: 100 - 600 mm
Kalınlık (Thickness)	: 1,2 - 2,0 mm
Uzunluk (Length)	: 2500/3000 mm

Ürün Kodu Product Code	Genişlik Width (mm)	Kalınlık Thickness (mm)	Ağırlık* Weight* (Kg/m)	Ağırlık** Weight** (Kg/m)
EUH-10075-120	100	1,2	2,470	2,704
EUH-10075-150	100	1,5	3,089	3,332
EUH-10075-200	100	2,0	4,085	4,346
EUH-15075-120	150	1,2	2,941	3,219
EUH-15075-150	150	1,5	3,677	3,967
EUH-15075-200	150	2,0	4,870	5,181
EUH-20075-120	200	1,2	3,412	3,735
EUH-20075-150	200	1,5	4,266	4,602
EUH-20075-200	200	2,0	5,655	6,016
EUH-25075-150	250	1,5	4,855	5,237
EUH-25075-200	250	2,0	6,440	6,851
EUH-30075-150	300	1,5	5,444	5,873
EUH-30075-200	300	2,0	7,225	7,686
EUH-40075-150	400	1,5	6,621	7,143
EUH-40075-200	400	2,0	8,795	9,356
EUH-50075-150	500	1,5	7,799	8,413
EUH-50075-200	500	2,0	10,365	11,026
EUH-60075-150	600	1,5	8,976	9,684
EUH-60075-200	600	2,0	11,935	12,696

\* Pregalvaniz      \*\* Sıcak Daldırma Galvaniz  
\* Pregalvanized    \*\* Hot Dip Galvanized



EUH75 Serisi Yükleme Diyagramı  
(EUH75 Series Loading Diagram)



# Deliksiz Ağır Hizmet Tipi Kablo Kanalları

Solid Bottom Heavy Duty Type Cable Trays

# EUH100 SERIES



Ürün Kodu Product Code	Genişlik Width (mm)	Kalınlık Thickness (mm)	Ağırlık* Weight* (Kg/m)	Ağırlık** Weight** (Kg/m)
EUH-100100-120	100	1,2	2,933	3,211
EUH-100100-150	100	1,5	3,667	3,956
EUH-100100-200	100	2,0	4,856	5,166
EUH-150100-120	150	1,2	3,404	3,726
EUH-150100-150	150	1,5	4,256	4,592
EUH-150100-200	150	2,0	5,641	6,001
EUH-200100-120	200	1,2	3,875	4,242
EUH-200100-150	200	1,5	4,845	5,227
EUH-200100-200	200	2,0	6,426	6,836
EUH-250100-150	250	1,5	5,434	5,862
EUH-250100-200	250	2,0	7,211	7,671
EUH-300100-150	300	1,5	6,022	6,497
EUH-300100-200	300	2,0	7,996	8,506
EUH-400100-150	400	1,5	7,200	7,767
EUH-400100-200	400	2,0	9,566	10,176
EUH-500100-150	500	1,5	8,377	9,038
EUH-500100-200	500	2,0	11,136	11,846
EUH-600100-150	600	1,5	9,555	10,308
EUH-600100-200	600	2,0	12,706	13,516

Yükseklik  
(Height) : 100 mm

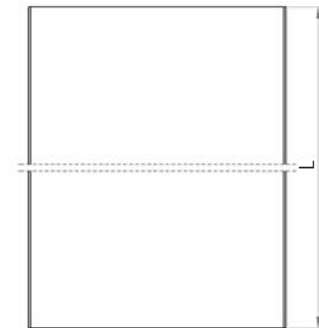
Genişlik  
(Width) : 100 - 600 mm

Kalınlık  
(Thickness) : 1,2 - 2,0 mm

Uzunluk  
(Length) : 2500/3000 mm

\* Pregalvaniz  
\* Pregalvanized

\*\* Sıcak Daldırma Galvaniz  
\*\* Hot Dip Galvanized



EUH100 Serisi Yükleme Diyagramı  
(EUH100 Series Loading Diagram)

